





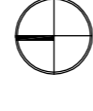
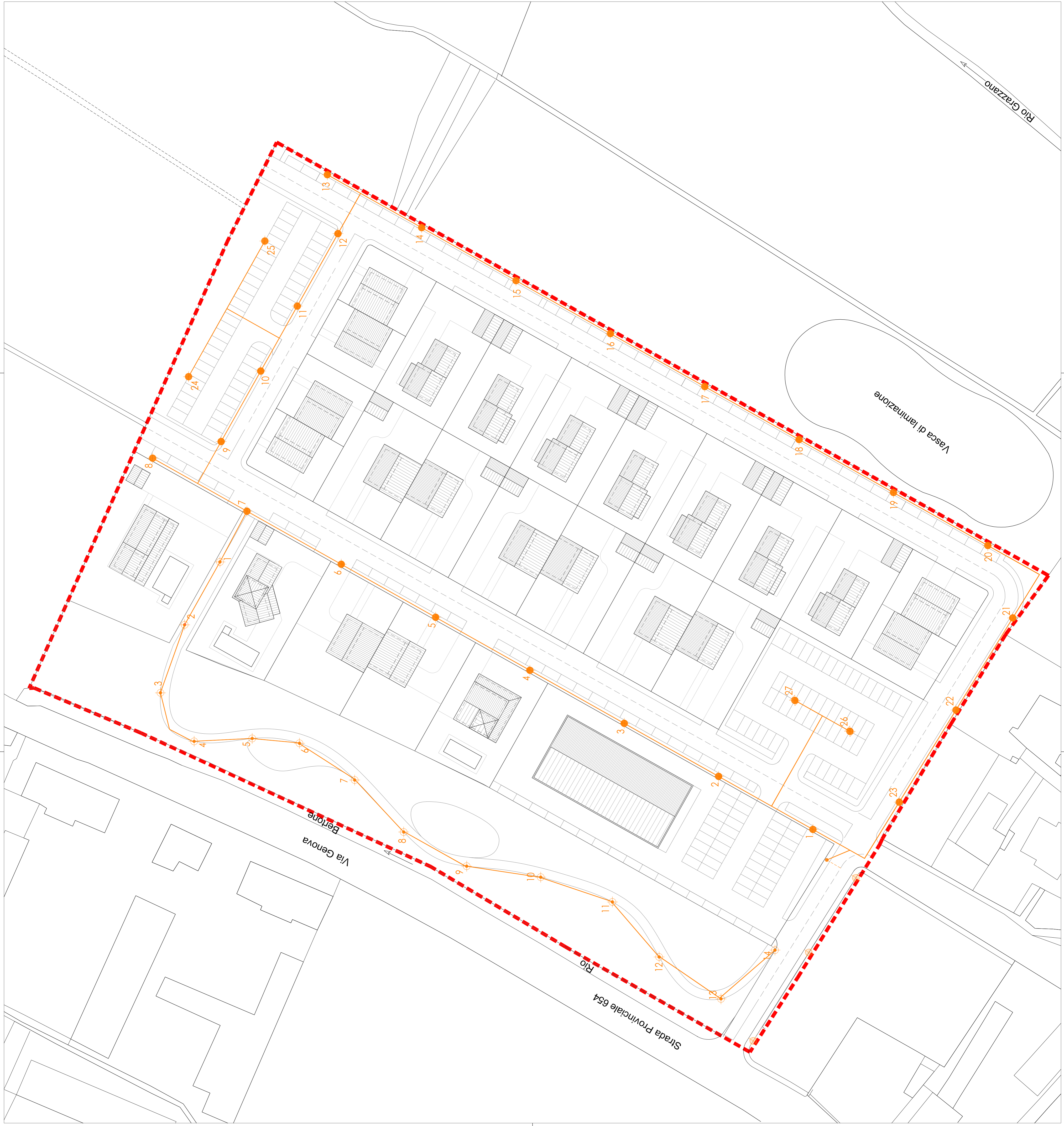


LEGENDA

-  palo illuminazione H 9 metri, 1 braccio
-  palo illuminazione H 9 metri, 2 bracci
-  palo illuminazione parco pubblico H = 4 m
-  cavoletto PE corrugato Ø110
-  linea esistente
-  palo illuminazione esistente



COMUNE | VIGOLZONE | PROVINCIA | PIACENZA

PIANO URBANISTICO ATTUATIVO A DESTINAZIONE PREVALENTEMENTE RESIDENZIALE - IN LOC. VILLO' DI VIGOLZONE - COMPARTO POC R12a



RETE ILLUMINAZIONE PUBBLICA

Società Agricola AL.BE.RO. srl
 Via Ferdinando di Borbone
 29122 Piacenza
 Web www.allevamentialbero.com
 Legale Rapp. | Sig. Giorgio Rossetti

Studio Associato Arch. ODDI
 Corso Matteotti n. 86
 Castel San Giovanni (PC)
 Web www.studiooddi.it
 Progettista | Dott. Giuseppe ODDI - Dott. Nicola ODDI

SCALA	1:500	ELABORATO IN	3.10	DATA	07/12/2021	REVISIONE	0	
CODICE LAVORO							NOME FILE Piacenza_Villorino_20181212_07122021	